



# **QUICK GUIDE**

*for*

## **COATS**





Thank you for your download. This is an instructional PDF for turn-down collars and shawl collars. It includes written instructions as well as small illustrations for easier understanding. This PDF is meant to show how you can construct these two types of collars yourself.

This PDF is part of the ULTIMATE GUIDE FOR JACKETS & COATS which is an extensive booklet which guides you step by step through all things coats. It is similar to this, which would be, I guess, a „chapter“ of the booklet. I highly recommend to have a look at the full version as it's a compact list of all steps you have to follow and all my tricks I learnt over the years and in university to create professional garments.

By the way, most things can not only be used in coats or jackets, a lot of tips and tricks can be projected onto other types of garments. Collars, e.g., are pretty much universally used in all types of clothing, as well as lining and generally tips I give you for sewing everything together.

The patterns in this PDF are made to fit the coat blocks + 7,5cm that are included in the ULTIMATE GUIDE FOR JACKETS & COATS. If you'd like to make a garment to your specific measurements, you'll have to construct these collars by your measurements. Collars are, like sleeves, very individual to your own pattern.

The patterns in this PDF do not include seam allowance. Please add your preferred seam allowance to your fabric before cutting it out.

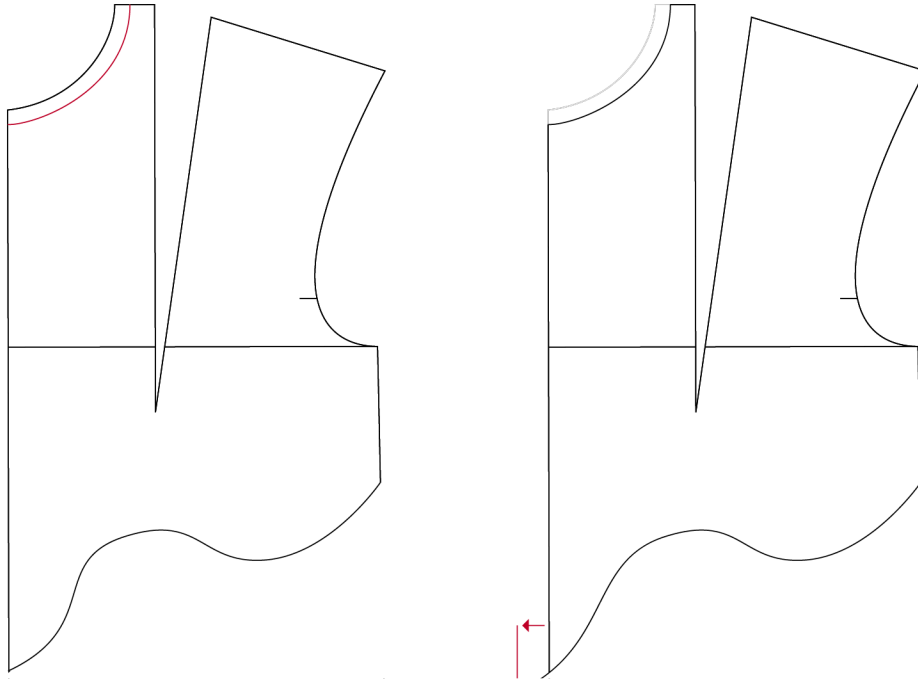
I recommend to always sew a mockup to see how the fit is and if you need some alterations.

This PDF is for personal use only. With your download you agree to not duplicate this in any way or distribute it to others.

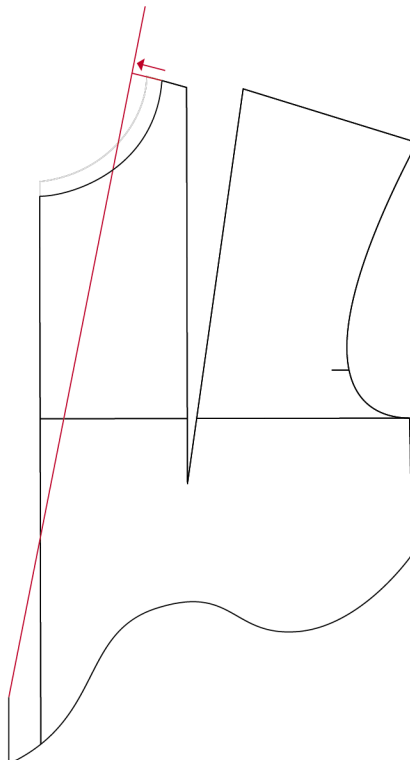
© Katrin Possberg

## SHAWL COLLAR

Widen your neck line by 1cm in the cf, 1cm at the shoulder and 0,5cm in the cb (left). Measure your overlap width at your cf (here: 2cm). Draw a parallel line to your cf all the way down to your hem (right).



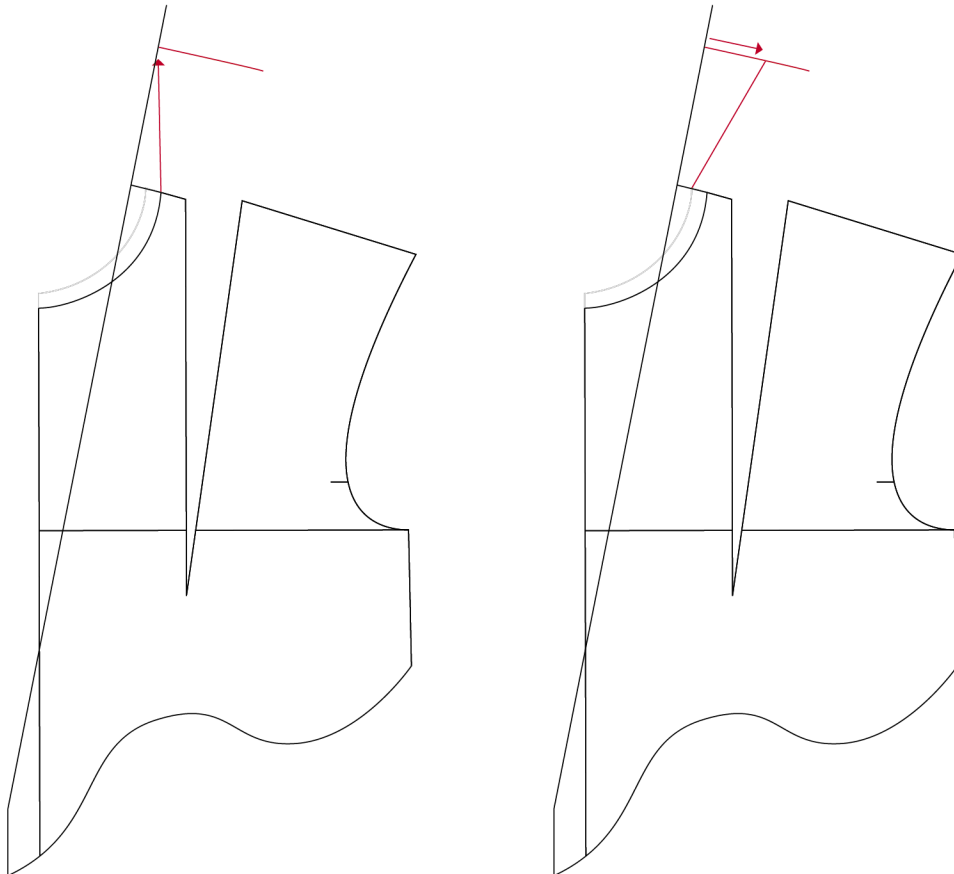
Elongate your shoulder line to the left and measure your side collar band width (between 1,5 - 2,5cm) (here: 2cm). Draw your fold line. Extend it beyond your shoulder line.



Measure from your widened neck point towards the fold line your back neck length. Angle a 90° line to the right (left). Measure from your bust line to the point where your fold line crosses your cf (= X). Is this point below your bust line = -X. Is it above your bust line = +X. Decide on your collar width (between 2 - 5cm) (here: 5cm). Calculate:

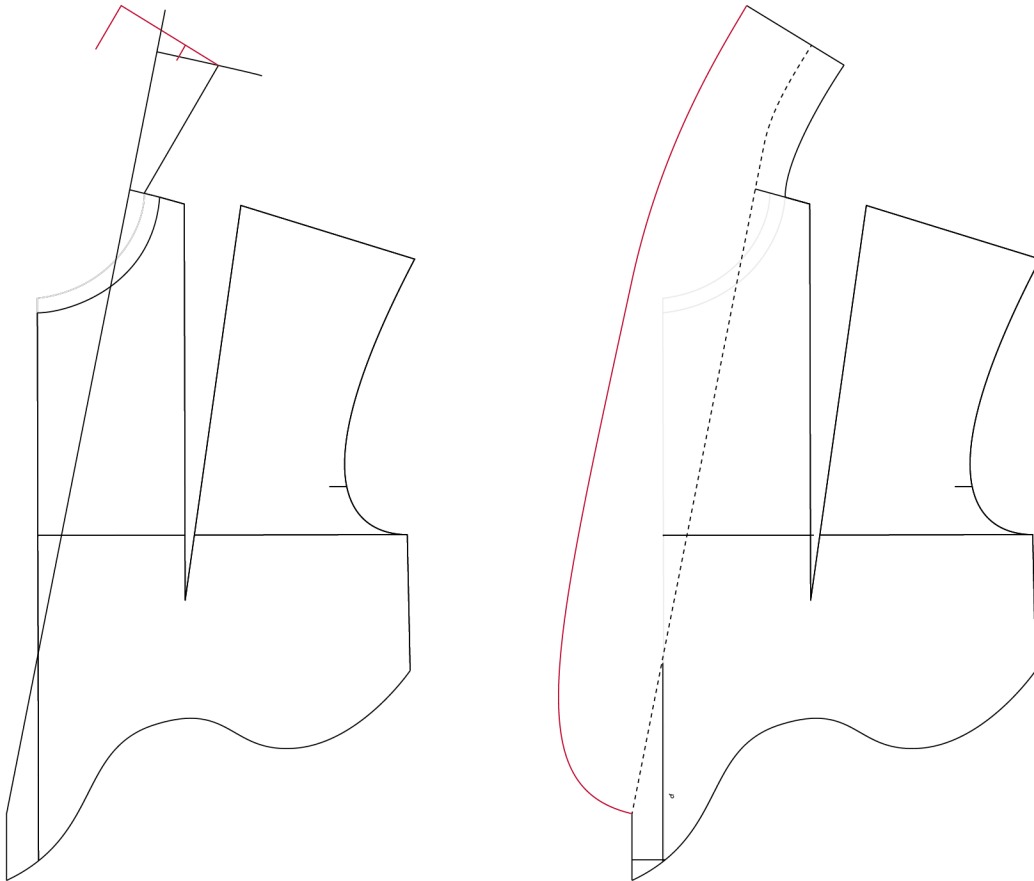
collar width  $\pm 1/10 \cdot X$  (here: 5cm -  $1/10 \cdot 8\text{cm} = 4,2\text{cm}$ )

Measure this number on the angled line to the right (right).





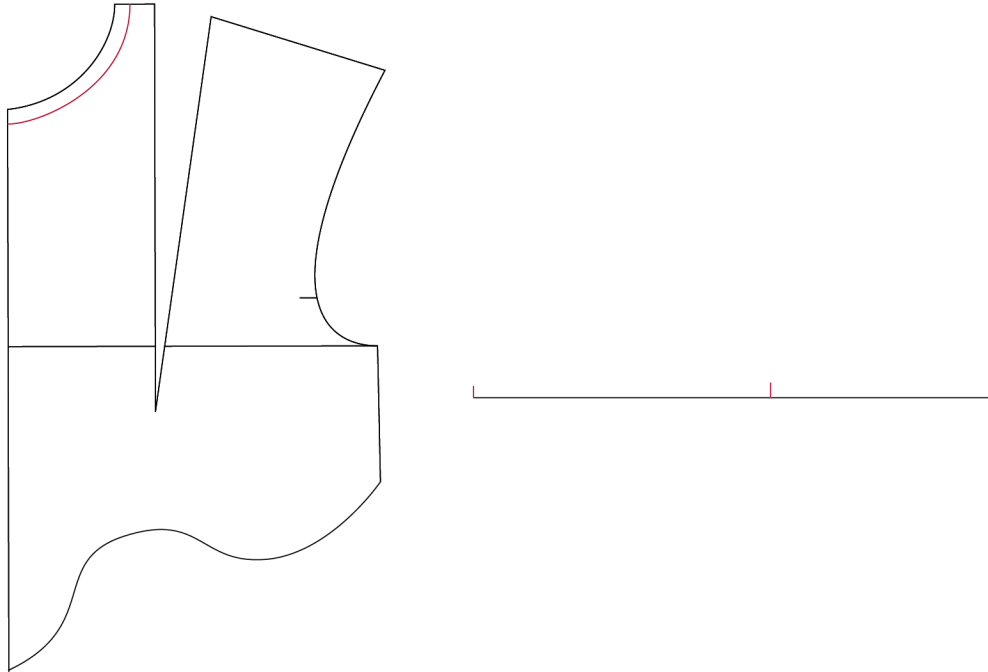
Draw a line from that point to half of your previously measured side collar band width at your shoulder line. Angle this line at  $90^\circ$  to the left and measure your back collar band width that is 0,5cm more than your side collar band width (here: 2,5cm) and your collar width (here: 5cm) which is the number you used in the formula (left). Draw out your shawl collar by angling at  $90^\circ$  in the cb and curvin it nicely into the point your fold line ends in. Make sure the line is parallel to your fold line.



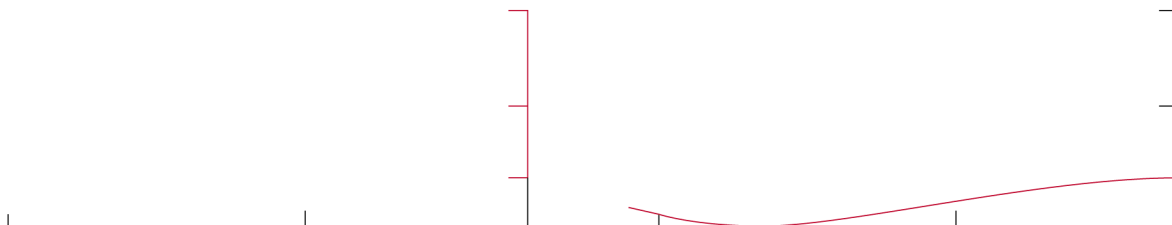
It is important to note that a shawl collar which doesn't have a separate collar piece can only be constructed within the measurements given in brackets. Any collar or collar band width larger than the given numbers need a separate collar pattern piece which is not illustrated in this guide.

## TURN-DOWN COLLAR

Widen your neck line by 1cm in the cf, 1cm at the shoulder and 0,5cm in the cb (left). Measure your widened front and back neck line and draw a horizontal line with your complete neck length. Mark your front neck length on the left and your back neck length on the right. Measure 1,5 - 2,5cm up on the right (here: 2cm) (right).

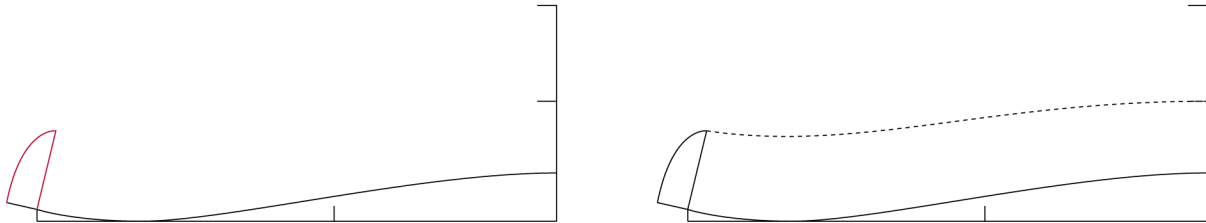


Measure your collar band width (2 - 4cm) (here: 3cm) and your collar width (collar band width + 1cm) (here: 4cm). Measure up 0,5cm in the cf (left). Draw out the neck line of your collar in an S shape. Elongate for your overlap in the front (here: 1,5cm) (right).

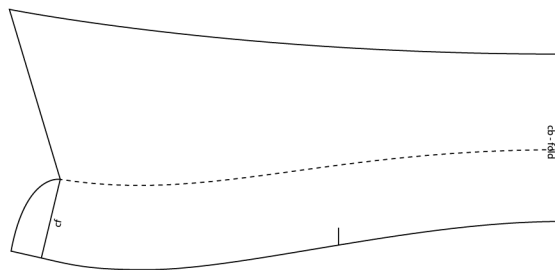




Draw a 90° angled line up at your cf. Measure your collar band width and curve your overlap into your cf (left). Draw in your fold line which is parallel to your neck line (right).



Measure your front and back necklines on your S shaped curve and make sure the numbers are still correct. Mark your shoulder seam with a notch. Shape your collar tip how you prefer and curve it into the cb at an 90° angle.







## COLLAR FACINGS

When constructing collars, you'll always have 2 collar patterns that differ by just a little bit. This is the same principle for all collars.

I will use the shawl collar as an example.

Copy out your constructed collar and front piece. Draw a 0,2 - 0,5cm parallel line to the outer edge of your shawl on the inside of your piece. Curve it nicely into the point your fold line ends. This will be your front piece.

Take the other pattern and draw a parallel line with the same measurement on the inside of your pattern piece from the point you fold line ends parallel to your overlap line down to your hem.

Close if needed your shoulder dart on this pattern piece. Measure 4cm on your shoulder line to the right and draw a nice curved line all the way to your hem. If you can, draw it through your breast point. This will be your front facing. The facing is sewn onto the front piece on the collar side and the lining on the right side which is divided by the line you just drew. Cut the pieces out.

Rotate your dart into the dividing line and smooth out the curve over your apex.

## LINING

A lining is not mandatory but certainly the most common way to finish the inside of coats. Especially if you have a lapel collar like the previously shown shawl collar, you'd construct a lining for your piece.

A lining is almost the same pattern piece as your outer body pieces with a few alterations which I'll explain to you now:

Make your lining pieces as easy as possible. Close any decorate seams that your outer body pattern might have which don't contribute to the fit of the garment and rotate your darts if possible into dividing lines (like in the front lining piece). You might need to sew your waist darts and your shoulder dart in the back if you have some.

Copy out your front and back pieces if you haven't yet. Measure 4cm on your back shoulder to the left and draw a parallel line to your widened back neck. This is your back neck facing. This shoulder fit together with your front facing.



Draw a parallel line to your cb to the right at about 1,5cm. This will be your fold in your back lining which is important for more movement. Especially in tighter pieces, the movement fold is very important to avoid wrinkles in the outer body of your jacket.

Measure 1,5 - 2cm up on your side seam at the armhole on front and back pieces. Redraw your armhole and let the curve ease into the armhole points in front and back. Do the same for your sleeve lining.

If you have shoulder pads, take out the height of your pad in your shoulder and your sleeve.

I suggest to cut out your outer pieces at the hem with 4cm seam allowance (this only works for straight hem lines. If you have a curved hem, you need to copy out a separate hem facing) and your lining with 1cm seam allowance. You can then iron your hem up 4cm and use this as your hem lining. Your lining will fold nicely over the hem facing. This is done to avoid pulling on your outer fabric.



© Katrin Possberg, 2021

Graphic program: Adobe Illustrator CC

Come visit me over on  
[instagram.com/thisiskachi](https://www.instagram.com/thisiskachi)  
[youtube.com/c/THISISKACHI](https://www.youtube.com/c/THISISKACHI)  
[thisiskachi.com](https://thisiskachi.com)

To learn more about sewing!